

Unit 7, Castle Business Centre, Queensferry road, Dunfermline, Fife, KY11 8NT, SCOTLAND
Tel 44(0)1383 626659 Fax: 44(0)1383 626828 sales@submertec.co.uk

HD ILLUMINATED—PIPE INSPECTION CAMERA

Seaspy Model HD-IL

This new HD underwater video camera has integrated LED lighting to allow inspection inside pipes and confined spaces.

It has been developed for use with a Super Spyball inspection system and can be fitted to the underwater cable in place of the Spyball.

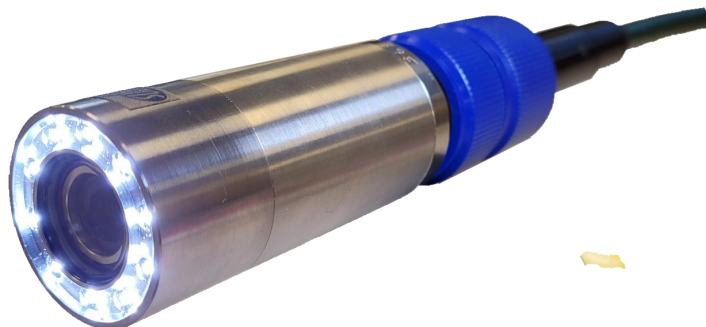
Operation of the lights is from the normal Spyball control buttons including dimming.

A unique feature of this camera is the ability to switch between HD-TVI and CVBS video signals to enable it to operate from either HD or CVBS controllers.

The HD-TVI video signal provides exceptional 1080p HD picture quality over cables in excess of 200 metres long.

Machined from solid Titanium, the housing has immunity to corrosion during long term immersion in seawater.

The camera can be fitted with a BH-8M connector for direct connection to a Super Spyball cable, an MC-BH6M or a penetrator with tail to other connectors as required.



SEASPY HD-IL CAMERA SPECIFICATION

Dimensions	40mm diameter, 93mm long (excl connector)
Weight	330gm in air
Depth Rating	300 Metres (328 feet)
Material	Titanium
Light required	1 Lux minimum light
Field of view	75 degrees Horizontal in water
Resolution	1080p HD Video
Video Output	HD-TVI / CVBS Switchable
Power Supply	15 –24 volts dc at 400mA
Connector options	Other connectors can be supplied on request

All systems are sold with a 12 Months warranty.

Submertec underwater video systems are available in a number of configurations and with control options to suit a range of tasks from inspection to aquaculture – please visit our web site at www.submertec.co.uk to view these together with other Submertec products.

